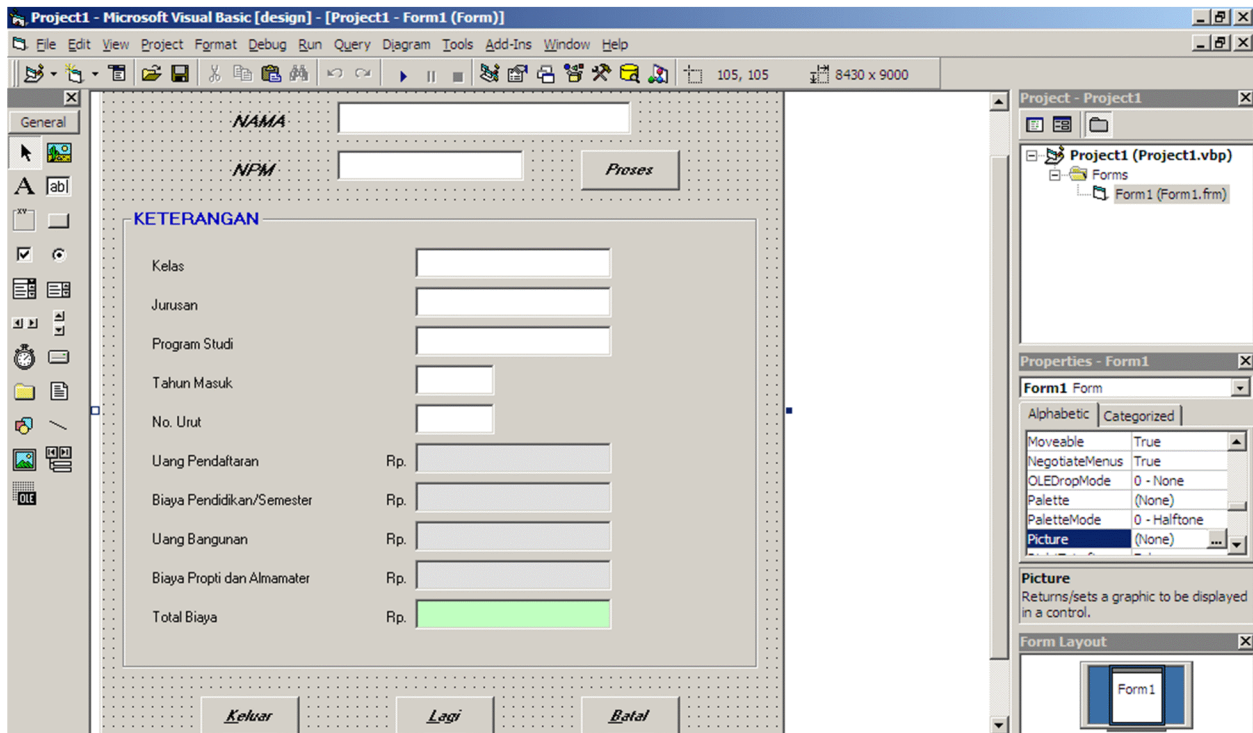


DESAIN



LISTING PROGRAM

```
Microsoft Visual Basic [design] - [Form1 (Code)]
File Project Format Debug Run Query Diagram Tools Add-Ins Window Help
Ln 45, Col 17
Proses Click
Private Sub batal_Click()
    nama.Text = ""
    npm.Text = ""
    kls.Text = ""
    jur.Text = ""
    prodi.Text = ""
    th.Text = ""
    no.Text = ""
    reg.Text = ""
    pndd.Text = ""
    bang.Text = ""
    propti.Text = ""
    tot.Text = ""
    nama.SetFocus
End Sub

Private Sub keluar_Click()
End
End Sub

Private Sub lagi_Click()
    nama.Text = ""
    npm.Text = ""
    kls.Text = ""
    jur.Text = ""
    prodi.Text = ""
    th.Text = ""
    no.Text = ""
    reg.Text = ""
    pndd.Text = ""
```

```
bang.Text = ""
propti.Text = ""
tot.Text = ""
nama.SetFocus
End Sub
```

```
Private Sub proses_Click()
If nama.Text = "" Then MsgBox ("Masukkan Nama")
Dim a, t, c, k, j, p As String
a = npm.Text
k = Left(a, 1)
j = Mid(a, 5, 1)
p = Mid(a, 6, 2)
t = Mid(a, 3, 2)
c = Right(a, 3)
no.Text = c
If npm.Text <> "" Then
    th.Text = "20" + t
Else
    MsgBox ("Masukkan NMP Anda")
    npm.SetFocus
End If
Select Case j
    Case "1"
        jur.Text = "Sistem Informasi"
    Case "2"
        jur.Text = "Manajemen Informatika"
    Case "3"
        jur.Text = "Manajemen dan Komp. Akuntansi"
End Select
```

```
If k = "E" Or k = "e" Then
    Select Case p
        Case "01"
            kls.Text = "Eksekutif"
            prodi.Text = "Strata Satu"
            reg.Text = "200000"
            pndd.Text = "1900000"
            bang.Text = "1250000"
            propti.Text = "600000"
        Case "02"
            kls.Text = "Eksekutif"
            prodi.Text = "Diploma Tiga"
            reg.Text = "150000"
            pndd.Text = "1650000"
            bang.Text = "1250000"
            propti.Text = "600000"
        Case "03"
            kls.Text = "Eksekutif"
            prodi.Text = "Diploma Satu"
            reg.Text = "150000"
            pndd.Text = "1350000"
            bang.Text = "1250000"
            propti.Text = "600000"
    End Select

    ElseIf k = "R" Or k = "r" Then kls.Text = "Reguler"
    Select Case p
        Case "01"
            kls.Text = "Eksekutif"
            prodi.Text = "Strata Satu"
```

```
            reg.Text = "200000"
            pndd.Text = "1500000"
            bang.Text = "1000000"
            propti.Text = "600000"
        Case "02"
            kls.Text = "Eksekutif"
            prodi.Text = "Diploma Tiga"
            reg.Text = "150000"
            pndd.Text = "1250000"
            bang.Text = "1000000"
            propti.Text = "600000"
        Case "03"
            kls.Text = "Eksekutif"
            prodi.Text = "Diploma Satu"
            reg.Text = "150000"
            pndd.Text = "1250000"
            bang.Text = "1000000"
            propti.Text = "600000"
    End Select
End If
tot.Text = Str(Val(reg.Text) + Val(pndd.Text) + Val(bang) + Val(propti))
End Sub
```

PREVIEW

Form1

NAMA

NPM

KETERANGAN

Kelas	<input type="text" value="Eksekutif"/>
Jurusan	<input type="text" value="Sistem Infomasi"/>
Program Studi	<input type="text" value="Strata Satu"/>
Tahun Masuk	<input type="text" value="2009"/>
No. Urut	<input type="text" value="197"/>
Uang Pendaftaran	Rp. <input type="text" value="200000"/>
Biaya Pendidikan/Semester	Rp. <input type="text" value="1900000"/>
Uang Bangunan	Rp. <input type="text" value="1250000"/>
Biaya Propti dan Almamater	Rp. <input type="text" value="600000"/>
Total Biaya	Rp. <input type="text" value="3950000"/>